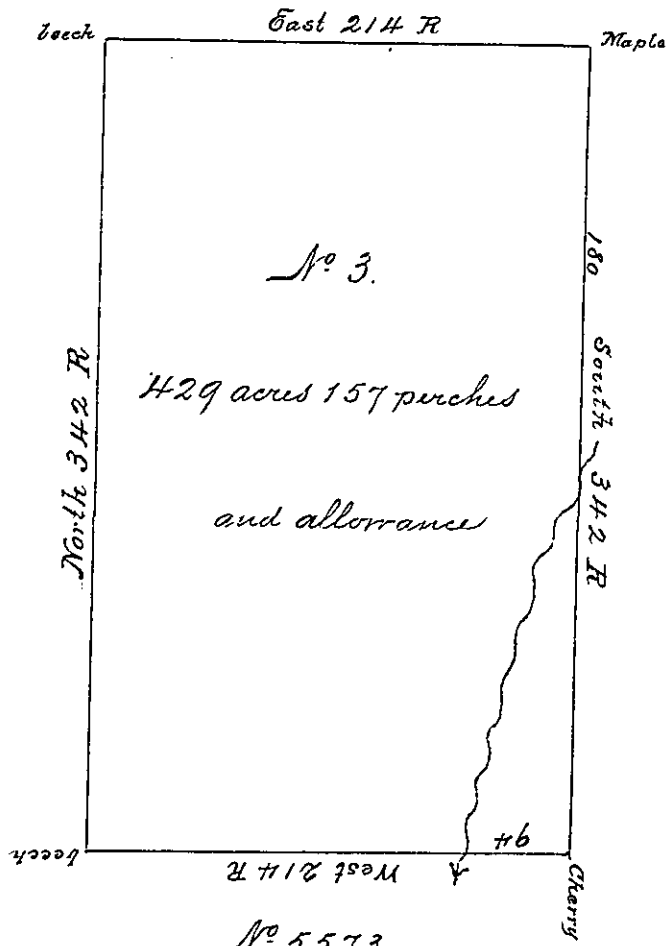


Land Surveyed to  
L. Wetmore Esq<sup>r</sup>

290

Land Surveyed to L. Wetmore Esq<sup>r</sup>



Land Surveyed to L. Wetmore Esq<sup>r</sup>

No. 5573  
John Dorsey's land

By virtue of a warrant granted to Lansing Wetmore and Berim<sup>m</sup> Bartholomew dated July 23. 1836 ~~xxxx~~ No. 3 and to me directed I have surveyed four hundred and twenty nine acres and one hundred and fifty seven perches of land in Hamilton township McKean County as per above draft surveyed according to law Oct. 13. 1836.

To John Taylor Esq<sup>r</sup>  
Surveyor General

Niram Payne  
Deputy Surveyor of  
McKean County

IN TESTIMONY that the above is a copy of the original remaining on file in the Department of Internal Affairs of Pennsylvania, made conformably to an Act of Assembly approved the 16th day of February, 1833. I have hereunto set my Hand and caused the Seal of said Department to be affixed at Harrisburg, this sixth day of October 1896.

James W. Fatta  
Secretary of Internal Affairs.